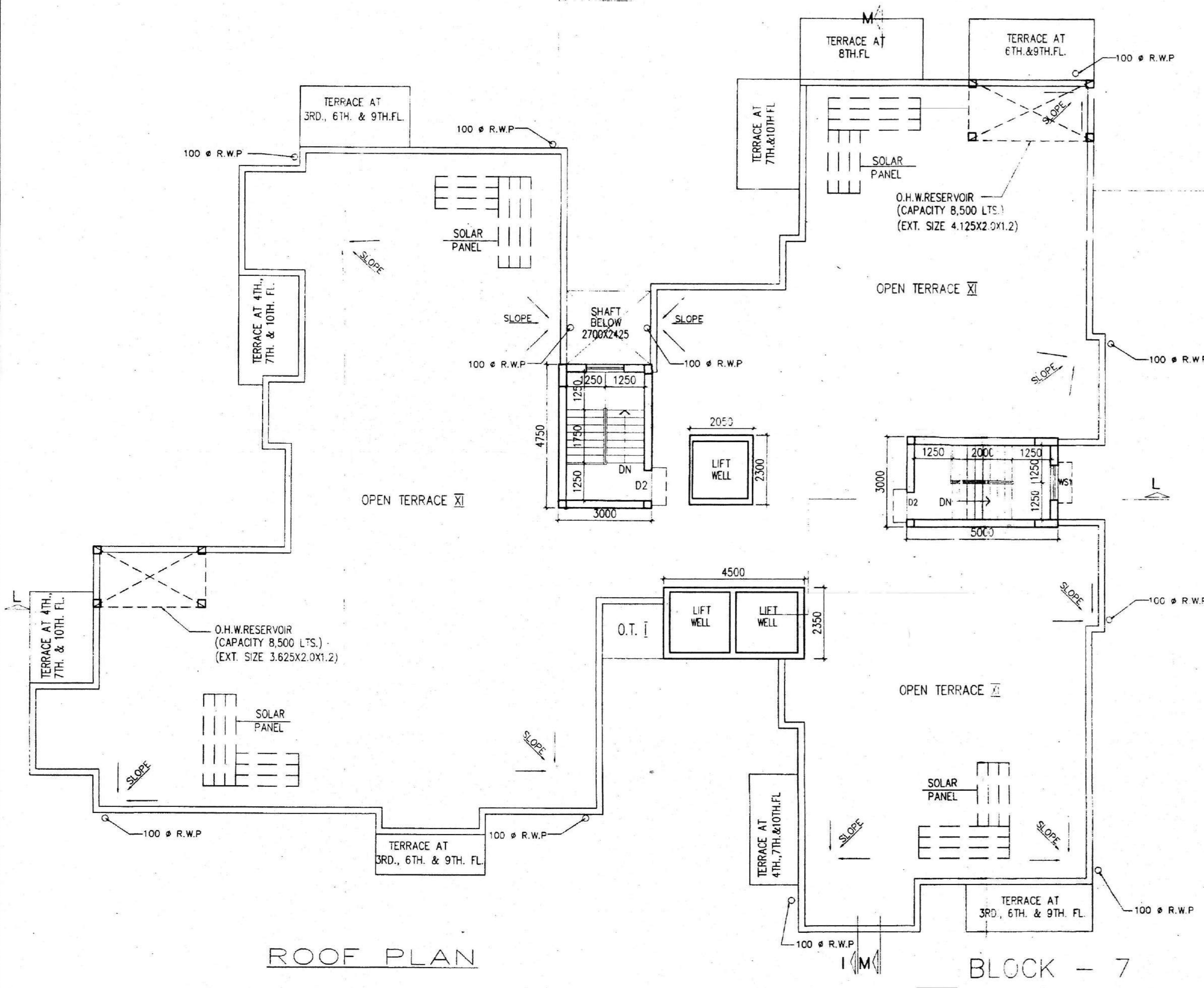


BLOCK - 6



BLOCK - 7



FRONT ELEVATION
TOWER - 6

TOWER - 6 WITH
CLUB

GENERAL NOTES
 1. ALL DIMENSIONS ARE IN MM.
 2. ALL EXTERNAL WALLS 200TH & 200TH & INTERNAL WALLS 125 & 75 TH. UNLESS OTHERWISE MENTIONED.
 3. ALL MASONRY WORKS ARE BOUNDED BY CEMENT MORTAR (1:6) & (1:4).
 4. EXTERNAL PLASTER IS 25TH & INTERNAL PLASTER IS 12MM PL WITH 1:4 MORTAR.
 5. ALL CONC. GRADE IS M20 (1:1.5:3).
CONTRACT NAME
 ARCH INFRA PROPERTIES PRIVATE LIMITED & OTHERS

For Arch Infra Properties Private Limited
 Rajendra Kumar Sengupta
 Authorised Signatory

SIGNATURE OF OWNER
 CERTIFICATE OF STRUCTURAL ENGINEER
 CERTIFIED THAT THE STRUCTURAL DESIGN & DRAWINGS OF BOTH FOUNDATION & SUPER STRUCTURE OF THE BUILDING HAS BEEN MADE BY ME CONSIDERING ALL POSSIBLE LOADS INCLUDING THE SEISMIC LOADS AS PER THE NATIONAL BUILDING CODE OF INDIA & CERTIFIED THAT IT IS SAFE & STABLE IN ALL RESPECTS.

SANJIB GUPTA
 REG. NO. 11545-51
 CHARITABLE ENGINEER
 ENLISTED STRUCTURAL REVIEWER NO. 16 R-10-G

SANJIV KUMAR
 S.E. (STRUCTURAL ENGINEERING)
 R.C.E., THE INDIAN SOCIETY OF ARCHITECTS
 R.S. & NO. 100, B.N.M.C.

SIGNATURE OF STRUCTURAL ENGINEER
 CERTIFICATE OF ARCHITECT
 THE L.B.A. HAS CERTIFIED ON THE PLAN ITSELF WITH FULL RESPONSIBILITY THAT THE BUILDING PLAN HAS BEEN DRAWN UP AS PER PROVISION OF W.B.M. BLDG. RULES 2007, AS AMENDED FROM ME TO THE AND THAT THE SITE CONDITIONS INCLUDING THE WIDTH OF THE ABUTTING ROAD CONFORM WITH THE PLAN AND IT IS A BUILDABLE SITE AND NOT A TANK OR A FILLED UP TANK.

SUNIL KUMAR
 GROUP TECHNICAL ENGINEER
 R.C.E., M.C.E. (CIVIL)
 REG. NO. 11545-51
 ARCHITECT
 Raj Kumar Agarwal
 Architect
 Member of Council of Architects
 No. 198, 1/198/01

SIGNATURE OF ARCHITECT
 (TOWER - 6 & 7)
 ROOF PLAN & ELEVATIONS

PROJECT
 REVISED PLAN OF TOWER-6 (B+G+H) STORED (33.3 M HIGH) COMMERCIAL BUILDING & TOWER (1,2,3,4,5) (B+G+H) STORED (33.3 M HIGH) AND TOWER (6,7) (B+G+H) STORED (33.3 M HIGH) RESIDENTIAL HOUSING COMPLEX AT ENG. NO. 534 OF MOUZA TEJERDA DAS NO. 10, 14, 15 & 144 OF MOUZA HARALKI KHATAN NO. 154, 154A, 154B, 154C, 154D, 154E, 154F, 154G, 154H, 154I, 154J, 154K, 154L, 154M, 154N, 154O, 154P, 154Q, 154R, 154S, 154T, 154U, 154V, 154W, 154X, 154Y, 154Z, 154AA, 154AB, 154AC, 154AD, 154AE, 154AF, 154AG, 154AH, 154AI, 154AJ, 154AK, 154AL, 154AM, 154AN, 154AO, 154AP, 154AQ, 154AR, 154AS, 154AT, 154AU, 154AV, 154AW, 154AX, 154AY, 154AZ, 154BA, 154BB, 154BC, 154BD, 154BE, 154BF, 154BG, 154BH, 154BI, 154BJ, 154BK, 154BL, 154BM, 154BN, 154BO, 154BP, 154BQ, 154BR, 154BS, 154BT, 154BU, 154BV, 154BW, 154BX, 154BY, 154BZ, 154CA, 154CB, 154CC, 154CD, 154CE, 154CF, 154CG, 154CH, 154CI, 154CJ, 154CK, 154CL, 154CM, 154CN, 154CO, 154CP, 154CQ, 154CR, 154CS, 154CT, 154CU, 154CV, 154CW, 154CX, 154CY, 154CZ, 154DA, 154DB, 154DC, 154DD, 154DE, 154DF, 154DG, 154DH, 154DI, 154DJ, 154DK, 154DL, 154DM, 154DN, 154DO, 154DP, 154DQ, 154DR, 154DS, 154DT, 154DU, 154DV, 154DW, 154DX, 154DY, 154DZ, 154EA, 154EB, 154EC, 154ED, 154EE, 154EF, 154EG, 154EH, 154EI, 154EJ, 154EK, 154EL, 154EM, 154EN, 154EO, 154EP, 154EQ, 154ER, 154ES, 154ET, 154EU, 154EV, 154EW, 154EX, 154EY, 154EZ, 154FA, 154FB, 154FC, 154FD, 154FE, 154FF, 154FG, 154FH, 154FI, 154FJ, 154FK, 154FL, 154FM, 154FN, 154FO, 154FP, 154FQ, 154FR, 154FS, 154FT, 154FU, 154FV, 154FW, 154FX, 154FY, 154FZ, 154GA, 154GB, 154GC, 154GD, 154GE, 154GF, 154GG, 154GH, 154GI, 154GJ, 154GK, 154GL, 154GM, 154GN, 154GO, 154GP, 154GQ, 154GR, 154GS, 154GT, 154GU, 154GV, 154GW, 154GX, 154GY, 154GZ, 154HA, 154HB, 154HC, 154HD, 154HE, 154HF, 154HG, 154HH, 154HI, 154HJ, 154HK, 154HL, 154HM, 154HN, 154HO, 154HP, 154HQ, 154HR, 154HS, 154HT, 154HU, 154HV, 154HW, 154HX, 154HY, 154HZ, 154IA, 154IB, 154IC, 154ID, 154IE, 154IF, 154IG, 154IH, 154II, 154IJ, 154IK, 154IL, 154IM, 154IN, 154IO, 154IP, 154IQ, 154IR, 154IS, 154IT, 154IU, 154IV, 154IW, 154IX, 154IY, 154IZ, 154JA, 154JB, 154JC, 154JD, 154JE, 154JF, 154JG, 154JH, 154JI, 154JJ, 154JK, 154JL, 154JM, 154JN, 154JO, 154JP, 154JQ, 154JR, 154JS, 154JT, 154JU, 154JV, 154JW, 154JX, 154JY, 154JZ, 154KA, 154KB, 154KC, 154KD, 154KE, 154KF, 154KG, 154KH, 154KI, 154KJ, 154KL, 154KM, 154KN, 154KO, 154KP, 154KQ, 154KR, 154KS, 154KT, 154KU, 154KV, 154KW, 154KX, 154KY, 154KZ, 154LA, 154LB, 154LC, 154LD, 154LE, 154LF, 154LG, 154LH, 154LI, 154LJ, 154LK, 154LL, 154LM, 154LN, 154LO, 154LP, 154LQ, 154LR, 154LS, 154LT, 154LU, 154LV, 154LW, 154LX, 154LY, 154LZ, 154MA, 154MB, 154MC, 154MD, 154ME, 154MF, 154MG, 154MH, 154MI, 154MJ, 154MK, 154ML, 154MN, 154MO, 154MP, 154MQ, 154MR, 154MS, 154MT, 154MU, 154MV, 154MW, 154MX, 154MY, 154MZ, 154NA, 154NB, 154NC, 154ND, 154NE, 154NF, 154NG, 154NH, 154NI, 154NJ, 154NK, 154NL, 154NM, 154NN, 154NO, 154NP, 154NQ, 154NR, 154NS, 154NT, 154NU, 154NV, 154NW, 154NX, 154NY, 154NZ, 154OA, 154OB, 154OC, 154OD, 154OE, 154OF, 154OG, 154OH, 154OI, 154OJ, 154OK, 154OL, 154OM, 154ON, 154OO, 154OP, 154OQ, 154OR, 154OS, 154OT, 154OU, 154OV, 154OW, 154OX, 154OY, 154OZ, 154PA, 154PB, 154PC, 154PD, 154PE, 154PF, 154PG, 154PH, 154PI, 154PJ, 154PK, 154PL, 154PM, 154PN, 154PO, 154PP, 154PQ, 154PR, 154PS, 154PT, 154PU, 154PV, 154PW, 154PX, 154PY, 154PZ, 154QA, 154QB, 154QC, 154QD, 154QE, 154QF, 154QG, 154QH, 154QI, 154QJ, 154QK, 154QL, 154QM, 154QN, 154QO, 154QP, 154QQ, 154QR, 154QS, 154QT, 154QU, 154QV, 154QW, 154QX, 154QY, 154QZ, 154RA, 154RB, 154RC, 154RD, 154RE, 154RF, 154RG, 154RH, 154RI, 154RJ, 154RK, 154RL, 154RM, 154RN, 154RO, 154RP, 154RQ, 154RR, 154RS, 154RT, 154RU, 154RV, 154RW, 154RX, 154RY, 154RZ, 154SA, 154SB, 154SC, 154SD, 154SE, 154SF, 154SG, 154SH, 154SI, 154SJ, 154SK, 154SL, 154SM, 154SN, 154SO, 154SP, 154SQ, 154SR, 154SS, 154ST, 154SU, 154SV, 154SW, 154SX, 154SY, 154SZ, 154TA, 154TB, 154TC, 154TD, 154TE, 154TF, 154TG, 154TH, 154TI, 154TJ, 154TK, 154TL, 154TM, 154TN, 154TO, 154TP, 154TQ, 154TR, 154TS, 154TT, 154TU, 154TV, 154TW, 154TX, 154TY, 154TZ, 154UA, 154UB, 154UC, 154UD, 154UE, 154UF, 154UG, 154UH, 154UI, 154UJ, 154UK, 154UL, 154UM, 154UN, 154UO, 154UP, 154UQ, 154UR, 154US, 154UT, 154UU, 154UV, 154UW, 154UX, 154UY, 154UZ, 154VA, 154VB, 154VC, 154VD, 154VE, 154VF, 154VG, 154VH, 154VI, 154VJ, 154VK, 154VL, 154VM, 154VN, 154VO, 154VP, 154VQ, 154VR, 154VS, 154VT, 154VU, 154VV, 154VW, 154VX, 154VY, 154VZ, 154WA, 154WB, 154WC, 154WD, 154WE, 154WF, 154WG, 154WH, 154WI, 154WJ, 154WK, 154WL, 154WM, 154WN, 154WO, 154WP, 154WQ, 154WR, 154WS, 154WT, 154WU, 154WV, 154WW, 154WX, 154WY, 154WZ, 154XA, 154XB, 154XC, 154XD, 154XE, 154XF, 154XG, 154XH, 154XI, 154XJ, 154XK, 154XL, 154XM, 154XN, 154XO, 154XP, 154XQ, 154XR, 154XS, 154XT, 154XU, 154XV, 154XW, 154XX, 154XY, 154XZ, 154YA, 154YB, 154YC, 154YD, 154YE, 154YF, 154YG, 154YH, 154YI, 154YJ, 154YK, 154YL, 154YM, 154YN, 154YO, 154YP, 154YQ, 154YR, 154YS, 154YT, 154YU, 154YV, 154YW, 154YX, 154YY, 154YZ, 154ZA, 154ZB, 154ZC, 154ZD, 154ZE, 154ZF, 154ZG, 154ZH, 154ZI, 154ZJ, 154ZK, 154ZL, 154ZM, 154ZN, 154ZO, 154ZP, 154ZQ, 154ZR, 154ZS, 154ZT, 154ZU, 154ZV, 154ZW, 154ZX, 154ZY, 154ZZ.

DATE	JOB NO.	DEALT	CHECKED	SHEET NO.
02.02.14	1807/2008/32	TUMPA		11 OF 17
SCALE 1:100				
ARCHITECT				
RAJ AGARWAL & ASSOCIATES				
88, ROY STREET, KOLKATA - 76				

